



# #PORT OF LAZARO CARDENAS MEXICO

---

Hutchison Ports Mexico | APRIL, 2019





# HUTCHISON PORTS LATIN AMERICA & CARIBBEAN

U.S.A.

BAHAMAS

• FREEPORT

MÉXICO

- ENSENADA
- LÁZARO CÁRDENAS
- MANZANILLO
- VERACRUZ

PANAMA

- BALBOA
- CRISTOBAL

ARGENTINA

• BUENOS AIRES

**Direct connection  
to Asian markets  
Mexican Central  
Pacific**

U.S.A.

Mexico

**Mexico  
City**

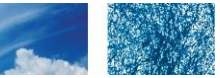
**22 M  
population**

**Port of  
Manzanillo**

**Port of Lazaro  
Cardenas**

**Out of total 4.5 M  
maritime TEUs,  
3.5 M (77%) result  
from/to both ports**

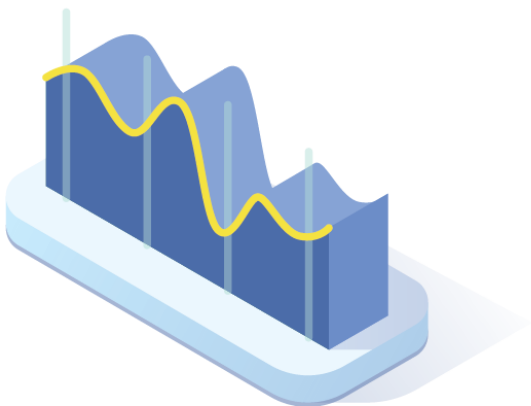




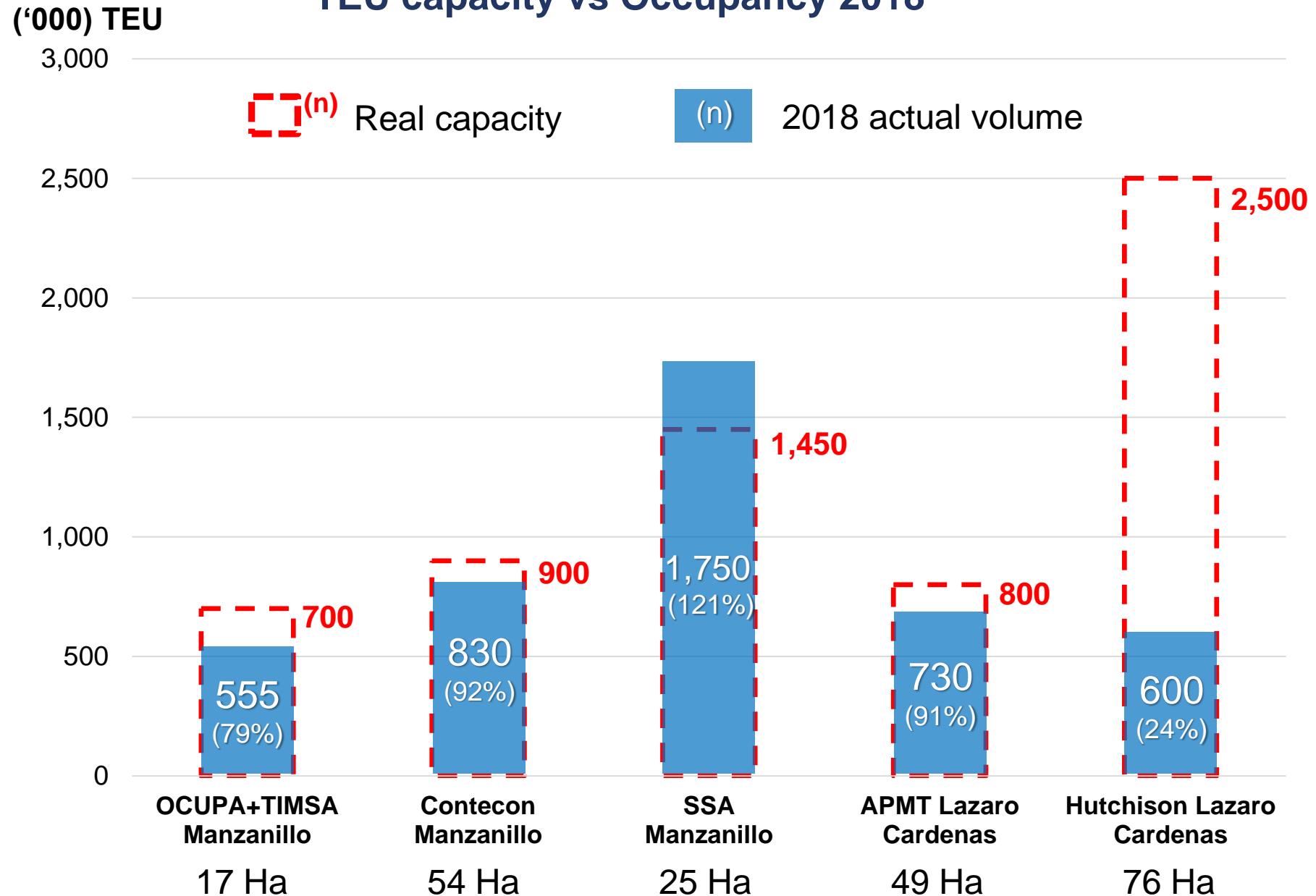
# TERMINALS BENCHMARKING

## FACTS:

- Additional 300k TEU in Manzanillo in 2019, will bring **largest historical congestion**.
- **You can** stop paying big storage bills in Manzanillo, by diverting cargo to LCT.
- Timely moment to plan 2019 peak season at LCT = **NO congestion** problems and **no extra-costs** for your local customers.



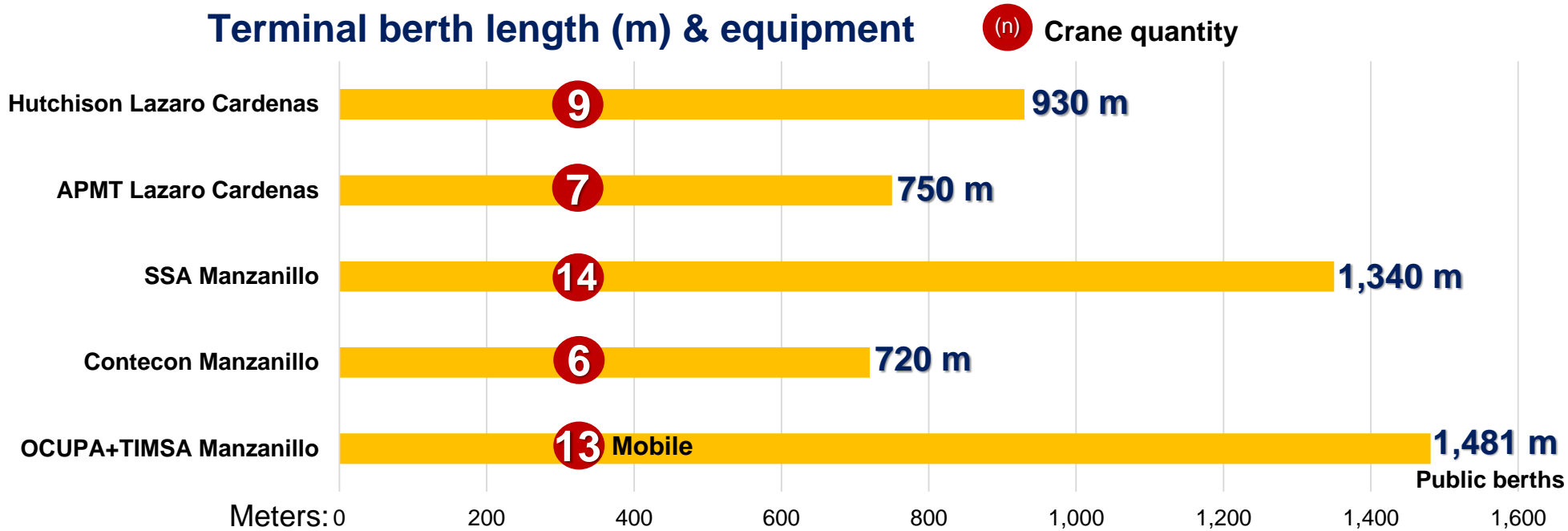
## MEXICAN CENTRAL PACIFIC TEU capacity vs Occupancy 2018





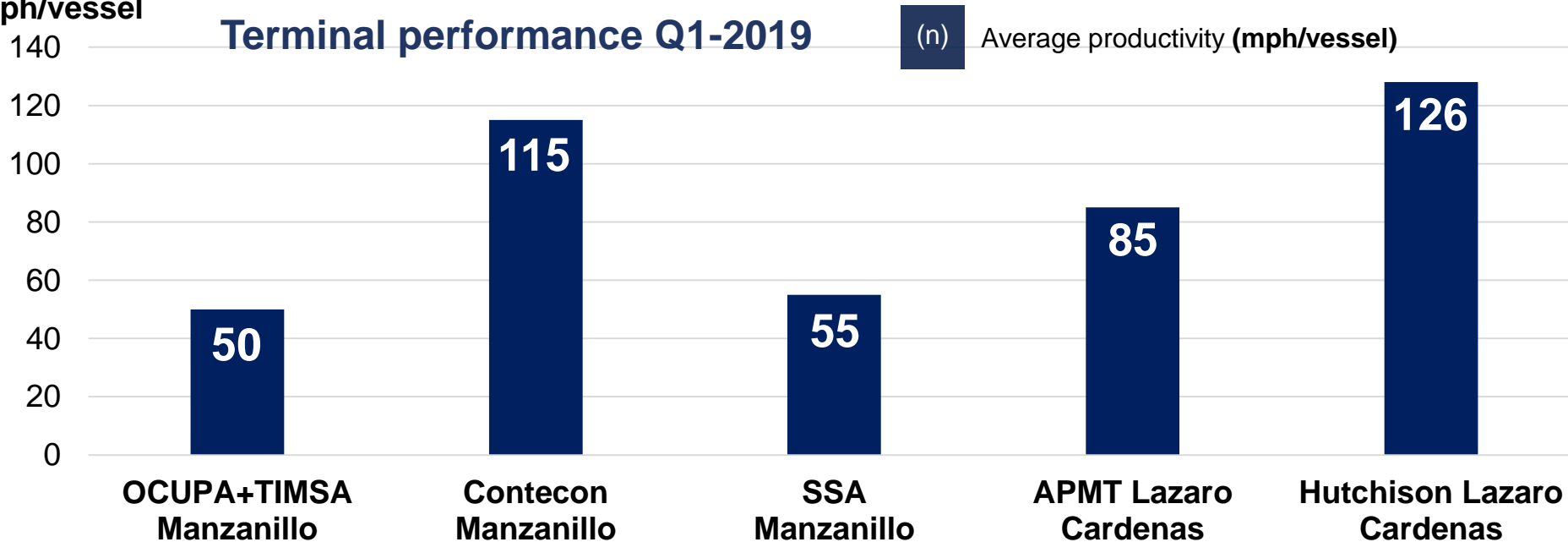
# TERMINALS BENCHMARKING

## Terminal berth length (m) & equipment



mph/vessel

## Terminal performance Q1-2019



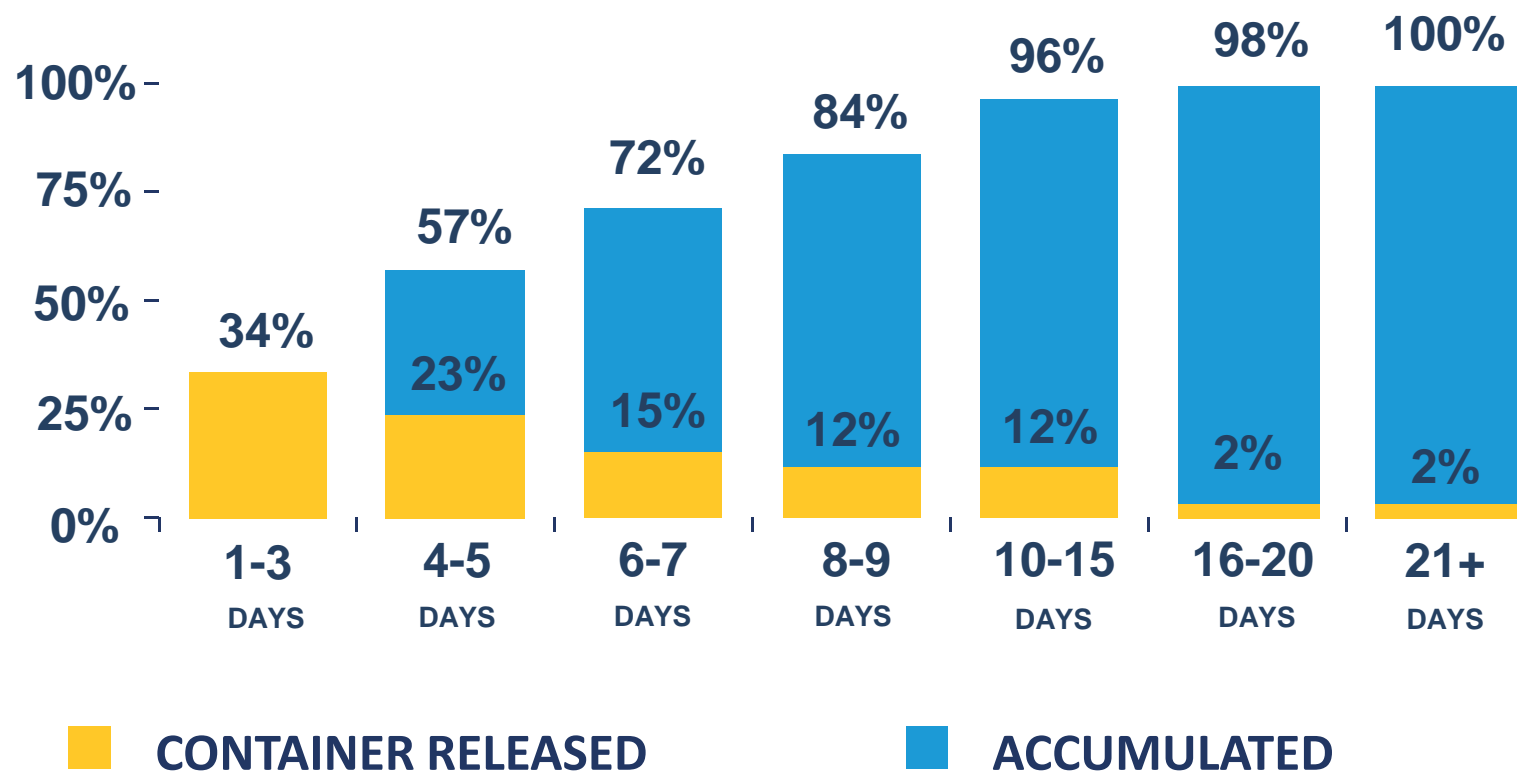
## FACTS:

Unlike Manzanillo port:

- LCT has **no vessel anchorage** waiting.
- LCT's high productivity allows shipping lines **less bunker consumption** in afterwards sailing.



## IMPORTS DISPATCH TIME IN LCT (2018)



## DWELL TIME

Manzanillo	11 days
APMT LC	8 days
Hutchison LC	6 days





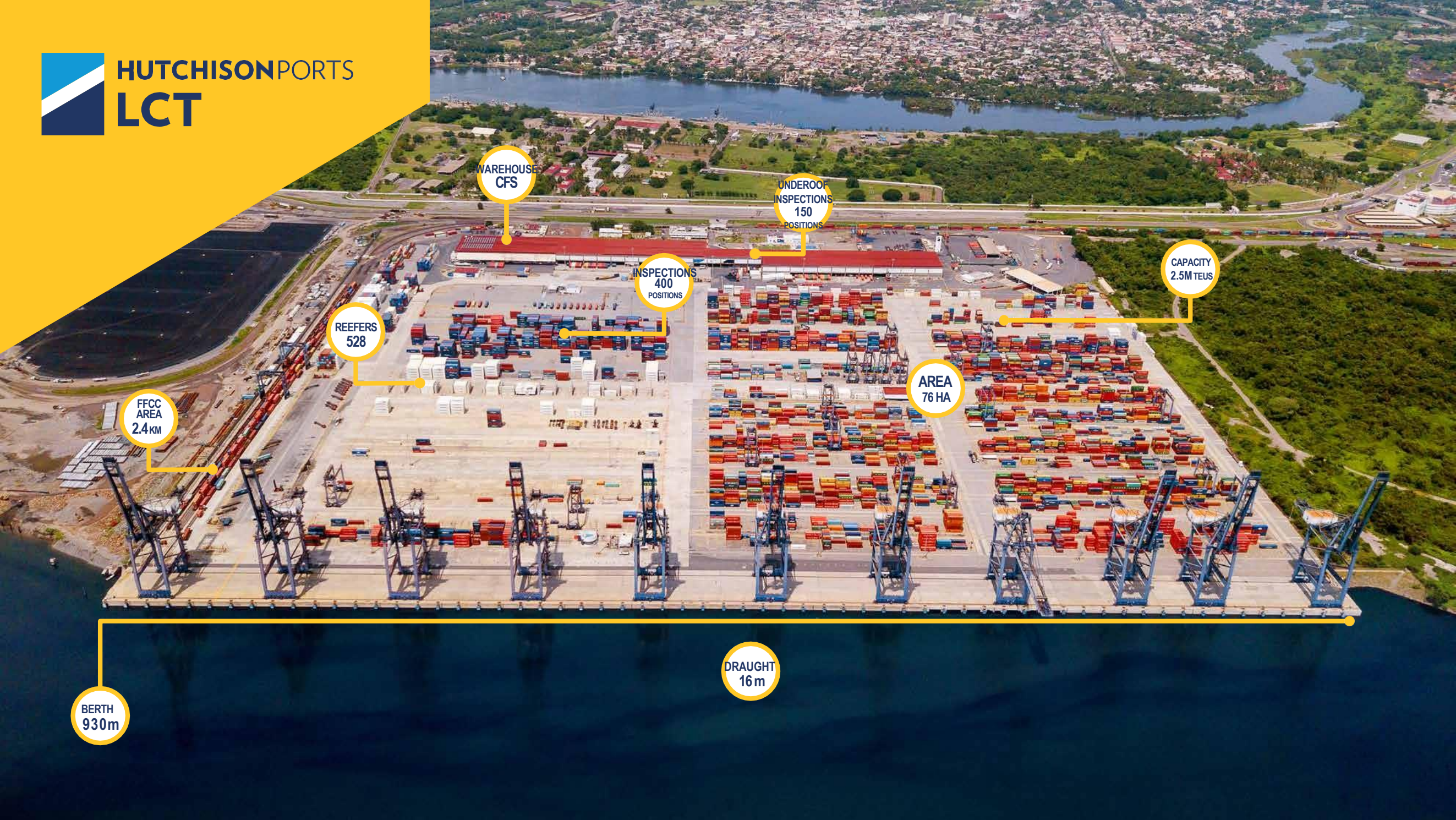


HUTCHISON PORTS  
LCT

HUTCHISON PORTS  
LCMT

**Lazaro Cardenas  
Mexican Pacific**





WAREHOUSE  
CFS

UNDERROOF  
INSPECTIONS  
150  
POSITIONS

INSPECTIONS  
400  
POSITIONS

CAPACITY  
2.5M TEUS

REEFERS  
528

AREA  
76 HA

FFCC  
AREA  
2.4KM

DRAUGHT  
16 m

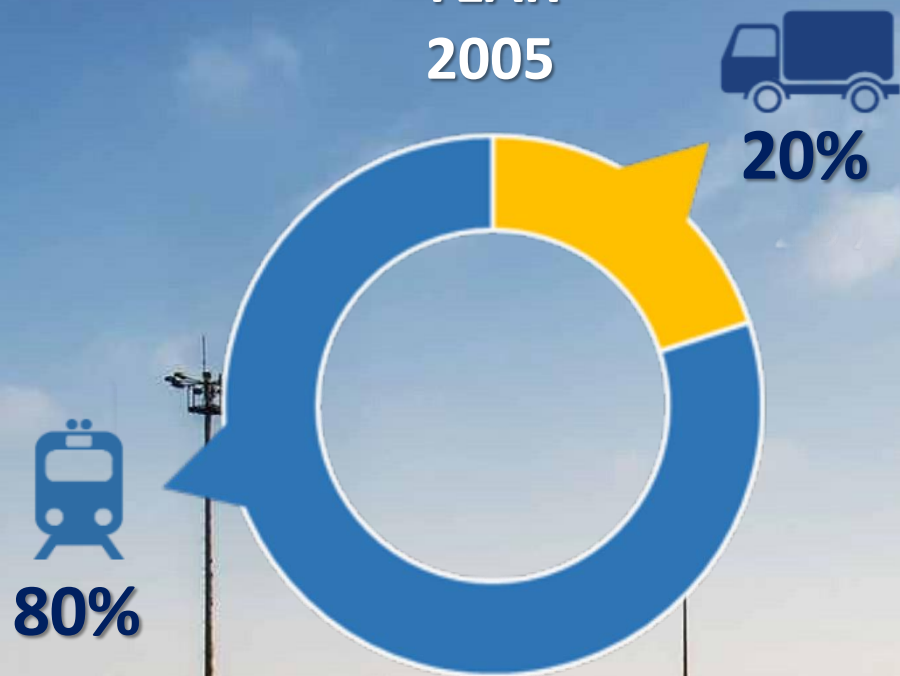
BERTH  
930m





# TRANSPORT SPLIT AT LCT LAZARO CARDENAS

YEAR  
2005



YEAR  
2018





# TRUCKING DISTANCES (KM)

		FROM		
		MEXICO CITY	QUERETARO	MONTERREY
TO	MANZANILLO	833	646	1,088
	LAZARO CARDENAS	613	503	1,147
	TILH	80	144	837

Lazaro Cardenas is the closest Pacific port to Mexico City and other main hinterlands.





## RAIL TRANSIT TIME (DAYS)



FROM

LAZARO  
CARDENAS

MANZANILLO

MEXICO CITY

1.5

2.1

QUERETARO

1.8

1.7

MONTERREY

3.0

3.6

TO

Lazaro Cardenas is the closest Pacific port to Mexico City and other main hinterlands.



CMA CGM

GP/CGCO

126

CHINA SHIPPING

中国海运集团

TRITON

WIN-S



# HIGH RISK ROUTES

## TOP 10 ROUTES WITH THE HIGHEST RISKS OF CARGO THEFTS IN 2018

RANK	ROUTE
1	QRO – CDMX – QRO
2	EDOMEX / CDMX – VER – EDOMEX / CDMX
3	MZO – GDL – MZO
4	MZO – EDO MEX – MZO
5	CDMX – PUE – CDMX
6	CDMX – MTY – CDMX
7	GDL – MTY – GDL
8	CHIS – CDMX – CHIS
9	PUE – CHIS – PUE
10	GDL – CHIS - GDL



MAP source: Sensitech - SCIC Global Cargo Theft Risk Assessment

DATA Source: DHL and Federal Authorities





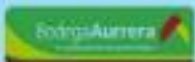
# PORTS AND CONNECTIVITY **FACTS** FROM / TO MEXICO CITY

MANZANILLO	LCT LAZARO CARDENAS
11 days dwell time	6 days dwell time
Large port additional storage costs	No port storage costs incurred
Customs house brokers heads	Customs house brokers satellite offices
Rail constantly under threat of thefts	Rail occasional blockades
220 km longer transit by truck	Shorter distance to Mexico City
100 km longer transit by rail	Shorter distance to Mexico City
Rail USD\$ cheaper	More expensive = more secure
Risk level elevated	Less risk level
All kinds of cargoes	Certified global companies





# END-USERS | MORE THAN 9,000 COMPANIES RELY ON LCT







**HUTCHISON PORTS**

**MEXICO**

**April 2019**

